

## کاربردهای سامانه‌ی ناوبری بیدو در زندگی روزمره <sup>۴</sup>

۱۰ تیر ۱۳۹۹



در اینفوگرافی زیر، خلاصه‌ای از کاربردهای شبکه‌ی ماهواره‌ای بیدو در زندگی روزمره‌ی مردم چین، در قالب اینفوگرافی قابل مشاهده است. در این تصویر، مدل‌های تلفن همراه چینی دارای تراشه‌ی مناسب برای دریافت سیگنال‌های این شبکه ناوبری ذکر شده است. همچنین کاربرد آن در شبکه‌ی حمل و نقل اتوبوس شهری، آمبولانس‌ها، پست و لجستیک، کشاورزی، همچنین پوشش مناطق دور افتاده و مدیریت بحران و بلایای طبیعی نمایش داده شده است. جالب اینکه تا آوریل سال ۲۰۱۹، بیش از ۶/۲ میلیون خودرو تجاری، ۳۰ هزار خودرو پست، ۸۰ هزار اتوبوس، ۳۲۰۰ تجهیزات ناوبری رودخانه‌ای و ۲۹۰۰ تجهیزات ناوبری دریایی از سامانه‌ی بیدو استفاده می‌کنند.

# DISCOVER **BEIDOU** SATELLITE SYSTEM IN YOUR LIFE

The Beidou satellites are orbiting high up in the sky.  
Do they play any role in your life?

**Yes.**

In fact, the Beidou Navigation Satellite System has  
been helping us in these areas from far above.

## MOBILE PHONE





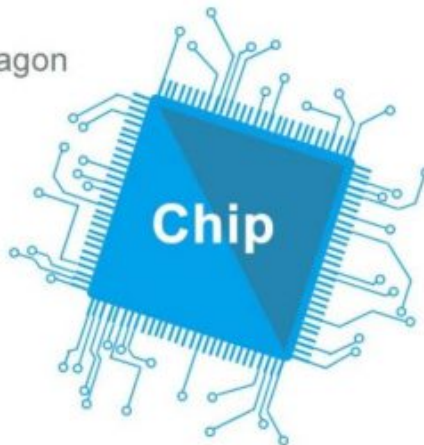
Qualcomm Snapdragon  
800,600,400



Huawei  
HiSilicon Kirin 930  
and above



MediaTek Inc  
P20, X20



As of Q3 in 2019, nearly **300** out of the 400-plus mobile phones accessing China's communication network used Beidou Navigation Satellite System.

## TRANSPORTATION



Buses in some cities are equipped with electric bus information board controlled by Beidou Navigation Satellite System. The board shows passengers **where the bus is now and how long they need to wait.**

## Ambulance



120 emergency command platform manages ambulances and first-aid staff based on Beidou Navigation Satellite System, and **dispatches first-aid resources in terms of distance and emergency level.**



## Logistics

E-commerce giant JD developed its logistic info system based on Beidou Navigation Satellite System. The system helps **JD lower logistic cost and increase delivery efficiency.**

As of April 2019, more than **6.2 million** commercial vehicles, **30,000** postal and delivery vehicles, **80,000** buses in 36 cities, **3,200** river navigation facilities and **2,900** maritime navigation facilities were using Beidou Navigation Satellite System.

AGRICULTURE

## AGRICULTURE



**Unmanned tractor**



**Unmanned transplanter**



**Unmanned harvester**



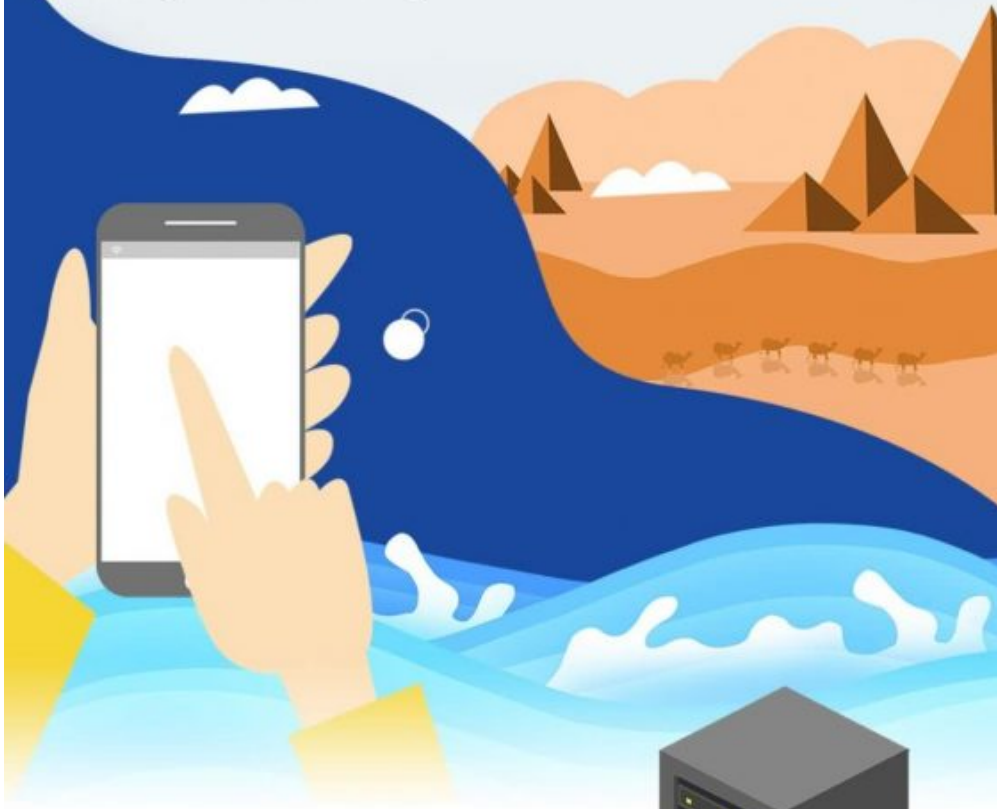
**Pesticide spraying drone**

Unmanned agricultural machinery based on Beidou Navigation Satellite System makes agricultural operation safe and accurate. It has been applied in **Beijing, Liaoning, Shanxi, Hubei, Jiangsu, Shanghai, Zhejiang, Heilongjiang** and **Xinjiang**.

## DISASTER RELIEF

People can send text and their location in regions that are

not covered by communication signals, such as **ocean** and **desert**, through a terminal connected with Beidou Navigation Satellite System.



China has set up a three-tier platform involving departments, provinces and cities (counties), equipped with **45,000** terminals.



Local government can report disasters through the platform **immediately** after disasters occur.

Civil affairs departments can monitor the location of disaster relief staff workers and vehicles and their operation condition

for staff workers and vehicles and their operation condition through the platform, which increases the management and allocation efficiency of disaster relief supplies.

**CHINADAILY** 中国日报网  
COM.CN

کد خبر: 2573-20200629

مشاهده منبع اصلی خبر